

# ESTANQUE ALJIBE

2.300 LITROS

Producto  
Reciclable 



Volumen interior  
**2.300 litros**

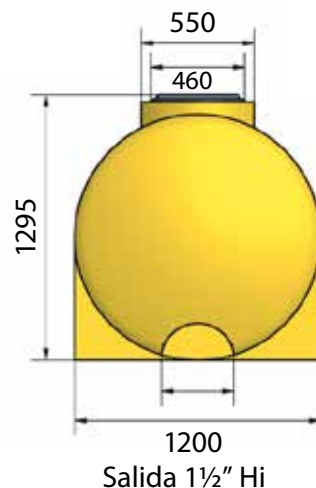
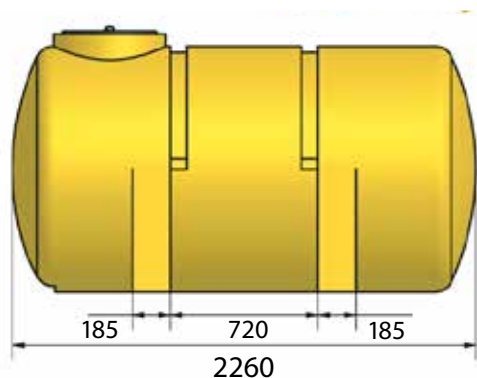
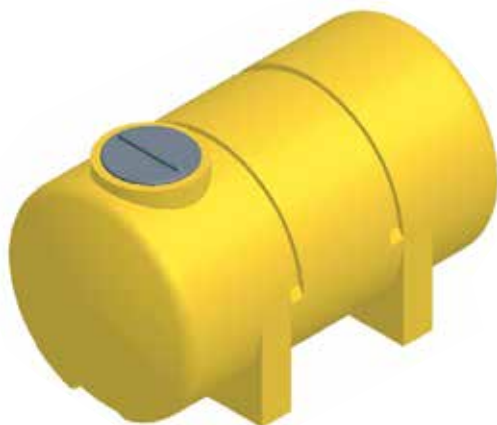


## Medidas:

Alto : 129,5 cm  
Ancho : 120 cm  
Largo : 226 cm



Uso:  
**Agua Potable**






## CARACTERÍSTICAS


Espesor promedio : 6 mm  
Variaciones en las medidas propias del material : 2%  
Material Estanque : Polietileno LLDPE  
Protección anti UV : Si  
Aditivos : Pigmento amarillo

Material Tapa y salida hilo exterior : Polietileno HDPE  
Protección anti UV : Si  
Densidad material : 945 kg/m<sup>3</sup>  
Aditivos : Pigmento amarillo  
Volumen total : 2.300 litros  
Incluye tapa  
Accesorios : Salida inferior 1 1/2"



### POLYCHEM SANTIAGO


 (2) 2 4209220  
 (2) 2 4209221  
+56 9 7848 0440  
+56 9 7814 9629

 [ventasantiago@polychem.cl](mailto:ventasantiago@polychem.cl)

 San Eugenio 12451, San Bernardo  
Santiago - Chile

### POLYCHEM PUERTO MONTT

 +56 65 227 5845  
 [ventassip@polychem.cl](mailto:ventassip@polychem.cl)

 Ruta 226 Km 9,6  
Camino aeropuerto  
Pto Montt - Chile



VISÍTENOS EN:

 <https://www.polychem.cl>